

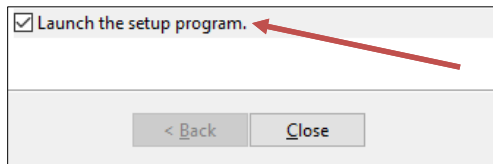
1. **VERY IMPORTANT** - ArcGIS Online accounts are required to obtain ArcGIS Pro licenses. If you do not have a Virginia Tech ArcGIS Online account, visit the site <https://viriniatech.maps.arcgis.com> and choose the "VIRGINIA TECH" login option. Log in and create an account.

2. Access <http://network.software.vt.edu> and login using your VT PID and password. Select **ESRI Software** and then choose **ESRI ArcGIS Pro**

3. Review and accept the license agreement and download the file on the following page to your computer. Once the download is complete, double click on the downloaded file to start the installation process.

4. Leave the default destination folder and click **Next**.

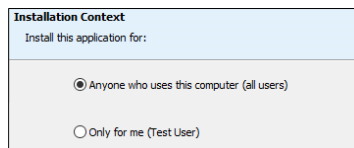
5. When extraction is complete, ensure that "Launch the setup program." is checked and click **Close**.



6. In the **Welcome to the ArcGIS Pro Setup program** window, click **Next**.

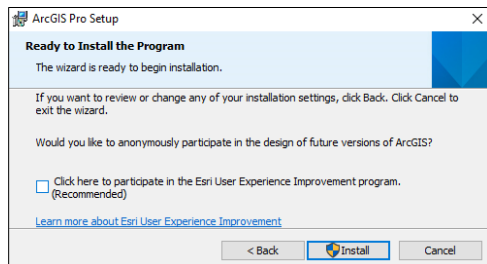
7. Accept the master agreement and then click **Next**.

8. In the next window, leave the default option selected and click **Next** to continue setup.

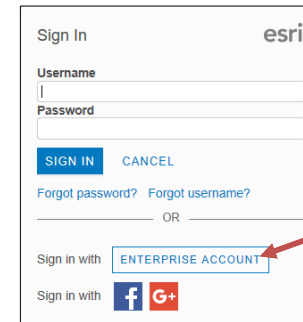


9. Leave the **Destination Folder** as the default and click **Next**.

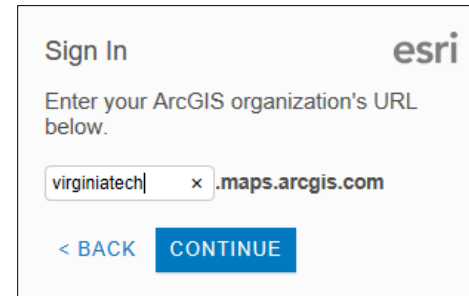
10. On the following screen, click **Install** to begin the installation.



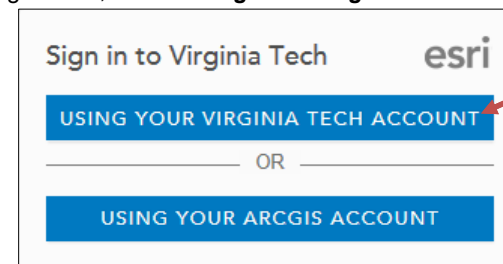
11. When the **ArcGIS Sign In** window appears, select **Enterprise Account** to sign in to ArcGIS Pro.



12. Enter **viriniatech** in the field, as shown below, then click **Continue**.



13. On following screen, select **Using Your Virginia Tech Account**.



14. Log in using your PID and PID password and your 2-factor Authentication method. ArcGIS Pro is now installed, activated, and ready for use.